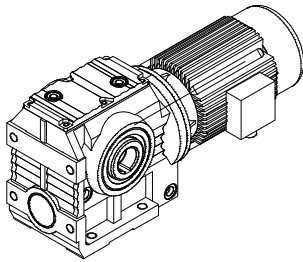




SG 系列斜齿-蜗轮减速器
SG series helical-worm gearmotor

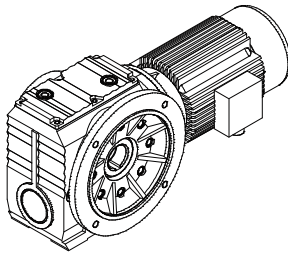


SG 系列斜齿--蜗轮蜗杆减速器
KG series helical-worm gearmotor

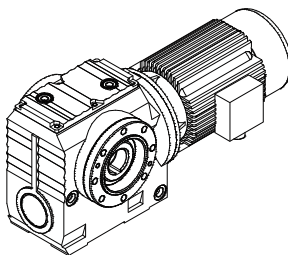


SGW.. 卧式底脚安装
Horizontal foot mounted

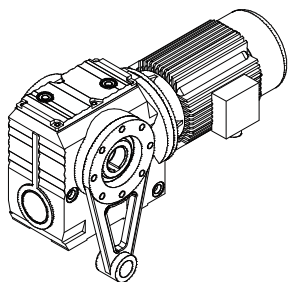
SG



SGL.. 立式法兰安装
Vertical flange mounted



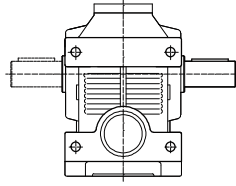
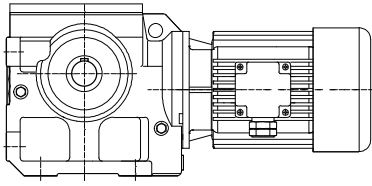
SGLX.. 小法兰安装
Small flange mounted



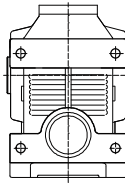
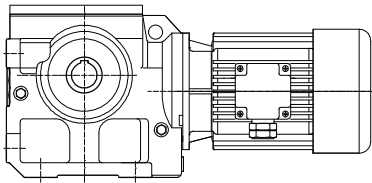
SGN.. 扭力臂安装
Torque arm mounted



SG 系列斜齿—蜗轮减速机型号/SG series helical-worm gear motor type

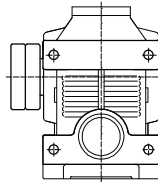
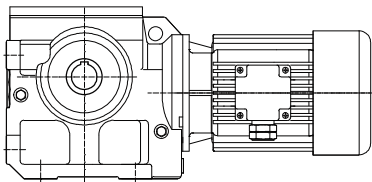


SGW..Y..Z
 底脚实心轴安装斜齿—蜗轮减速机
 Foot mounted helical-worm gear motor with solid shaft

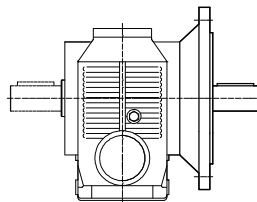
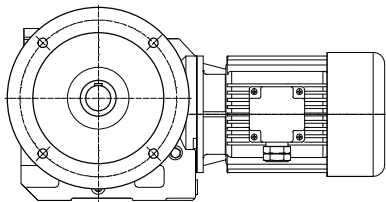


SGW..Y..K
 底脚空心轴安装斜齿—蜗轮减速机
 Foot mounted helical-worm gear motor with hollow shaft

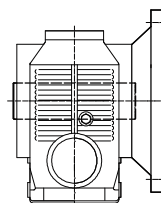
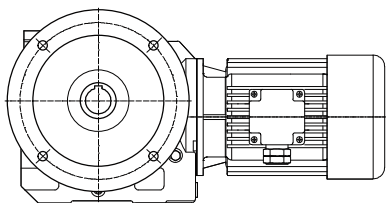
SGW..Y..KV
 底脚花键空心轴 (DIN5480) 安装斜齿—蜗轮减速机
 Foot mounted helical-worm gear motor with splined hollow shaft to DIN 5480



SGW..Y..KH
 底脚空心轴胀紧盘安装斜齿—蜗轮减速机
 Foot mounted helical-worm gear motor with hollow shaft and expansion disk

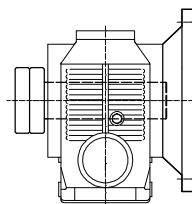
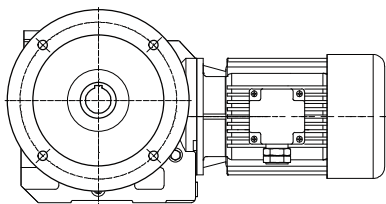


SGL..Y..Z
 B5法兰实心轴安装斜齿—蜗轮减速机
 B5 flange mounted helical-worm gear motor with solid shaft



SGL..Y..K
 B5法兰空心轴安装斜齿—蜗轮减速机
 B5 flange mounted helical-worm gear motor with hollow shaft

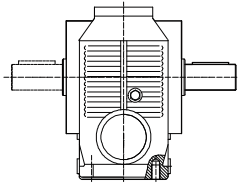
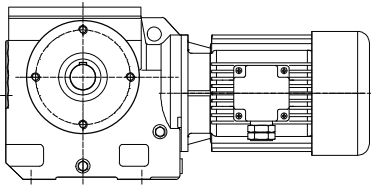
SGL..Y..KV
 B5法兰花键空心轴 (DIN5480) 安装斜齿—蜗轮减速机
 B5 flange mounted helical-worm gear motor with splined hollow shaft to DIN 5480



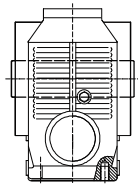
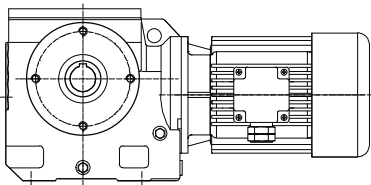
SGL..Y..KH
 B5法兰空心轴胀紧盘安装斜齿—蜗轮减速机
 B5 flange mounted helical-worm gear motor with hollow shaft and expansion disk



SG 系列斜齿—蜗轮减速机型号/SG series helical-worm gear motor type

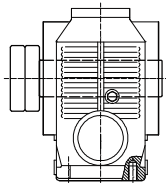
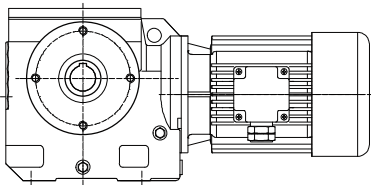


SGM..Y..Z
 底脚螺纹孔、端面螺纹孔实心轴安装斜齿—蜗轮减速机
 Foot threaded hole and end face threaded hole mounted helical-worm gear motor with solid shaft

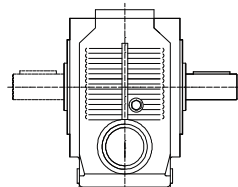
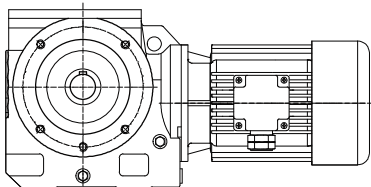


SGM..Y..K
 底脚螺纹孔、端面螺纹孔空心轴安装斜齿—蜗轮减速机
 Foot threaded hole and end face threaded hole mounted helical-worm gear motor with hollow shaft

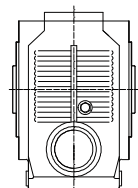
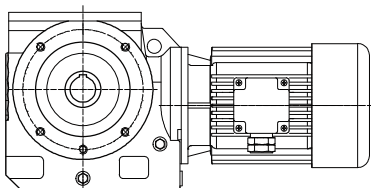
SGM..Y..KV
 底脚螺纹孔、端面螺纹孔花键空心轴 (DIN5480) 安装斜齿—蜗轮减速机
 Foot threaded hole and end face threaded hole mounted helical-worm gear motor with splined hollow shaft to DIN 5480



SGM..Y..KH
 底脚螺纹孔、端面螺纹孔空心轴胀紧盘安装斜齿—蜗轮减速机
 Foot threaded hole and end face threaded hole mounted helical-worm gear motor with hollow shaft and expansion disk

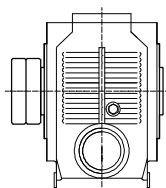
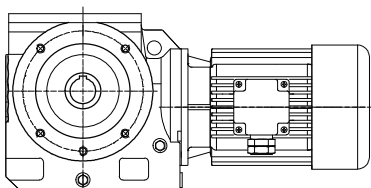


SGA..Y..Z
 端面外止口实心轴安装斜齿—蜗轮减速机
 End face out rabbet mounted helical-worm gear motor with solid shaft



SGA..Y..K
 端面外止口空心轴安装斜齿—蜗轮减速机
 End face out rabbet mounted helical-worm gear motor with hollow shaft

SGA..Y..KV
 端面外止口花键空心轴 (DIN5480) 安装斜齿—蜗轮减速机
 End face out rabbet mounted helical-worm gear motor with splined hollow shaft to DIN 5480

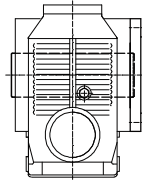
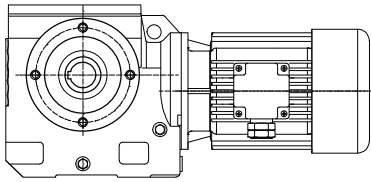


SGA..Y..KH
 端面外止口空心轴胀紧盘安装斜齿—蜗轮减速机
 End face out rabbet mounted helical-worm gear motor with hollow shaft and expansion disk

SG



SC系列斜齿-蜗轮减速机型号/SC series helical-worm gear motor type

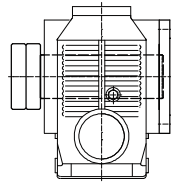
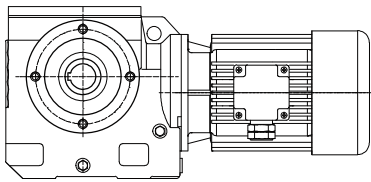


SGLX..Y..K

小法兰空心轴安装斜齿-蜗轮减速机
Small flange mounted helical-worm gear motor with hollow shaft

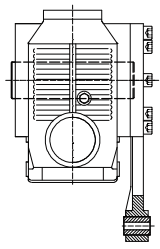
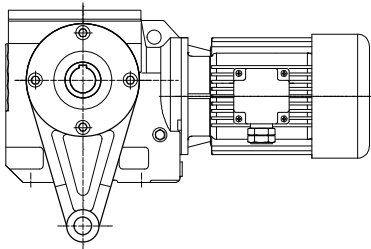
SGLX..Y..KV

小法兰花键空心轴 (DIN5480) 安装斜齿-蜗轮减速机
Small flange mounted helical-worm gear motor with splined hollow shaft to DIN 5480



SGLX..Y..KH

小法兰空心轴胀紧盘安装斜齿-蜗轮减速机
Small flange mounted helical-worm gear motor with hollow shaft and expansion disk

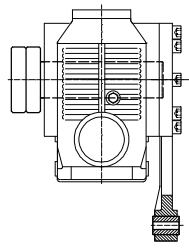
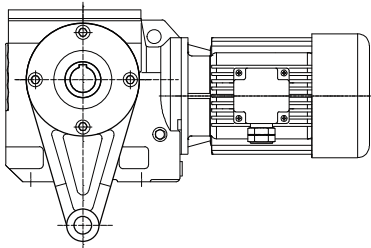


SGN..Y..K

扭力臂空心轴安装斜齿-蜗轮减速机
Torque arm mounted helical-worm gear motor with hollow shaft

SGN..Y..KV

扭力臂花键空心轴 (DIN5480) 安装斜齿-蜗轮减速机
Torque arm mounted helical-worm gear motor with splined hollow shaft to DIN 5480

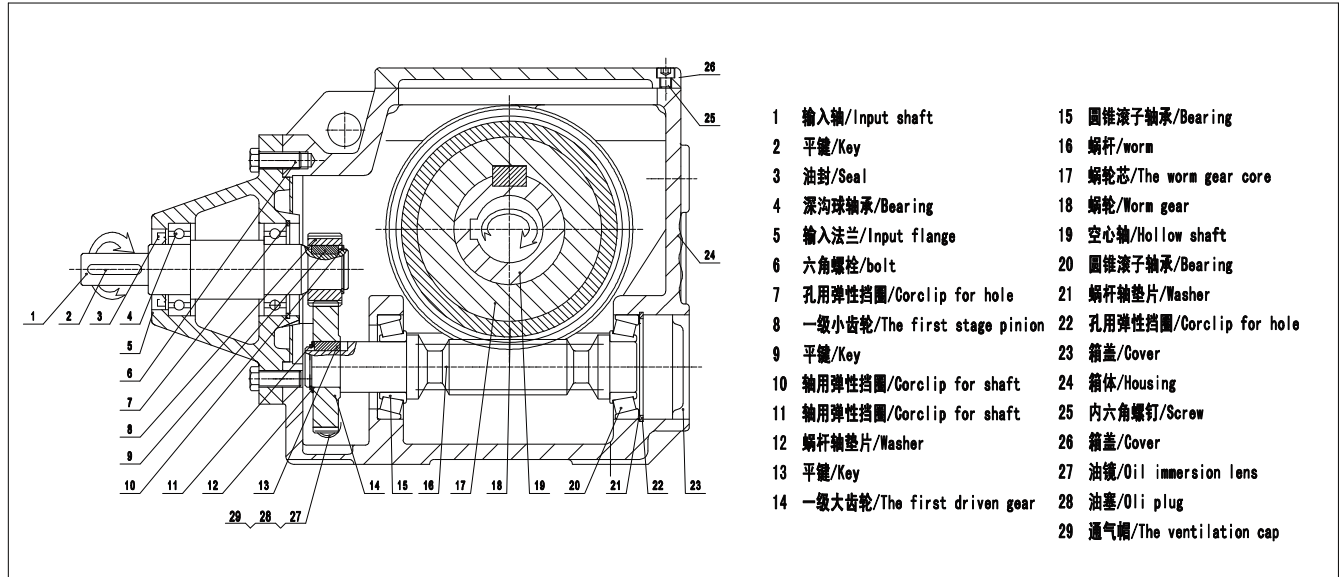


SGN..Y..KH

扭力臂空心轴胀紧盘安装斜齿-蜗轮减速机
Torque arm mounted helical-worm gear motor with hollow shaft and expansion disk



SG 系列减速器结构图/SG series structrue drawing

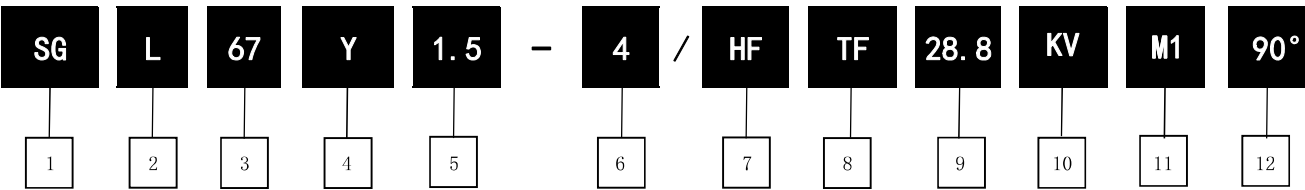


- | | |
|--------------------------------|----------------------------|
| 1 输入轴/Input shaft | 15 圆锥滚子轴承/Bearing |
| 2 平键/Key | 16 蜗杆/worm |
| 3 油封/Seal | 17 蜗轮芯/The worm gear core |
| 4 深沟球轴承/Bearing | 18 蜗轮/Worm gear |
| 5 输入法兰/Input flange | 19 空心轴/Hollow shaft |
| 6 六角螺栓/bolt | 20 圆锥滚子轴承/Bearing |
| 7 孔用弹性挡圈/Corclip for hole | 21 蜗杆轴垫片/Washer |
| 8 一级小齿轮/The first stage pinion | 22 孔用弹性挡圈/Corclip for hole |
| 9 平键/Key | 23 箱盖/Cover |
| 10 轴用弹性挡圈/Corclip for shaft | 24 箱体/Housing |
| 11 轴用弹性挡圈/Corclip for shaft | 25 内六角螺钉/Screw |
| 12 蜗杆轴垫片/Washer | 26 箱盖/Cover |
| 13 平键/Key | 27 油镜/Oil immersion lens |
| 14 一级大齿轮/The first driven gear | 28 油塞/Oil plug |
| | 29 通气帽/The ventilation cap |

SG

机型表示方法

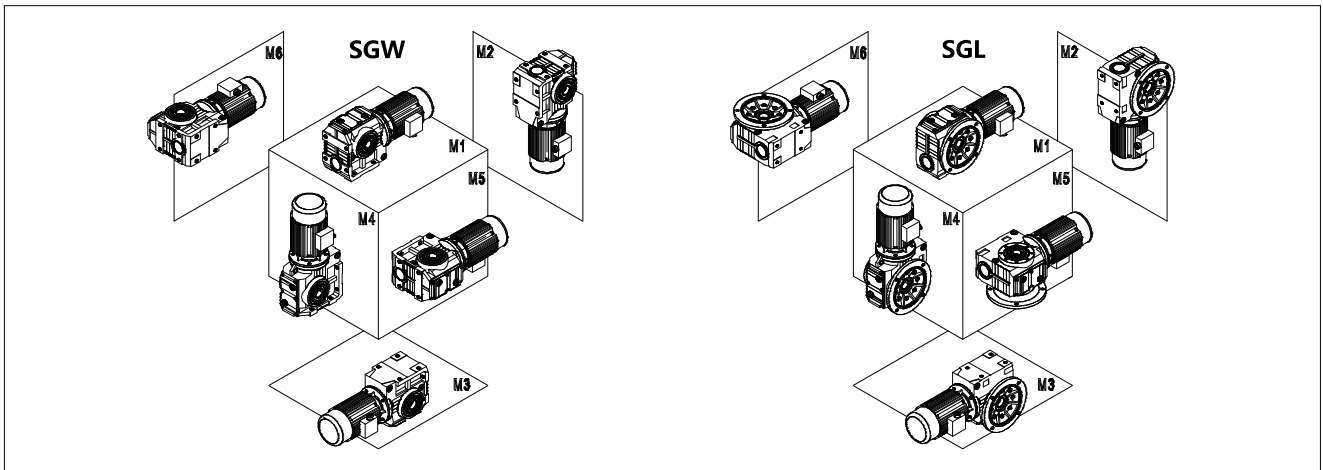
Model expression



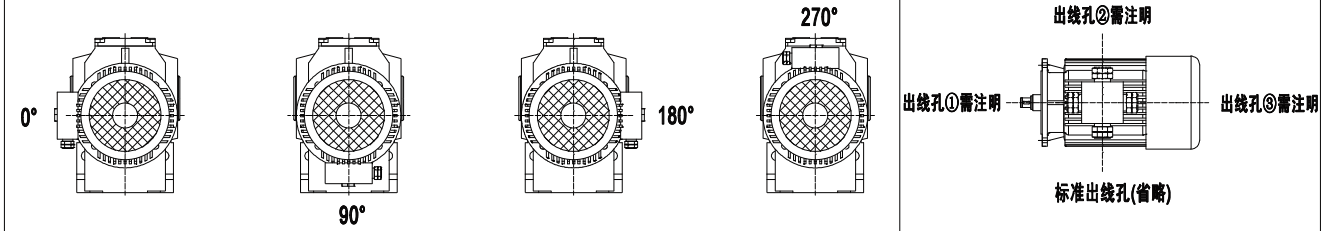
<p>1 产品代码</p> <p>RG—斜齿轮减速电机 FG—平行轴斜齿轮减速电机 KG—斜齿-螺旋锥齿轮减速电机 SG—斜齿-蜗轮蜗杆减速电机</p>	<p>2 装配型式</p> <p>W—卧式底脚安装 L—立式法兰安装 LX—小法兰安装 M—箱体端面螺纹安装 N—带扭力臂安装</p>	<p>3 减速机型号</p> <p>67—减速机 规格号为67</p>	<p>4 电动机</p> <p>Y—三相异步 YEJ—电磁刹车三相异步 YVP—变频调速三相异步 默认 (IP54) F—配电机输入法兰 S—配轴输入</p>	<p>5 电动机功率</p> <p>1.5—电机为1.5 KW 单位 KW</p>
<p>6 电动机级数</p> <p>2—电动机级数为2 4—电动机级数为4 6—电动机级数为6</p>	<p>7 手动释放装置</p> <p>无代码—无手动释放装置 HF—手动释放 锁在制动释放位置 HR手动释放 自动退回制动位置</p>	<p>8 电机热保护</p> <p>无代码—无电机热保护装置 TF—电机热保护装置</p>	<p>9 减速机传动比</p> <p>28.8—减速机 传动比为28.8</p>	<p>10 输出方式</p> <p>K—空心轴输出 KH—带胀紧盘空心轴输出 KV—渐开线花键空心轴输出 IZ—实心轴单轴输出(A或B) 2Z—实心轴双轴输出</p>
<p>11 安装位置</p> <p>M1—安装型式图中 M1位置</p>	<p>12 接线盒位置</p> <p>无代码—安装型式 图中0°位置 90°—安装型式 图中90°位置</p>			



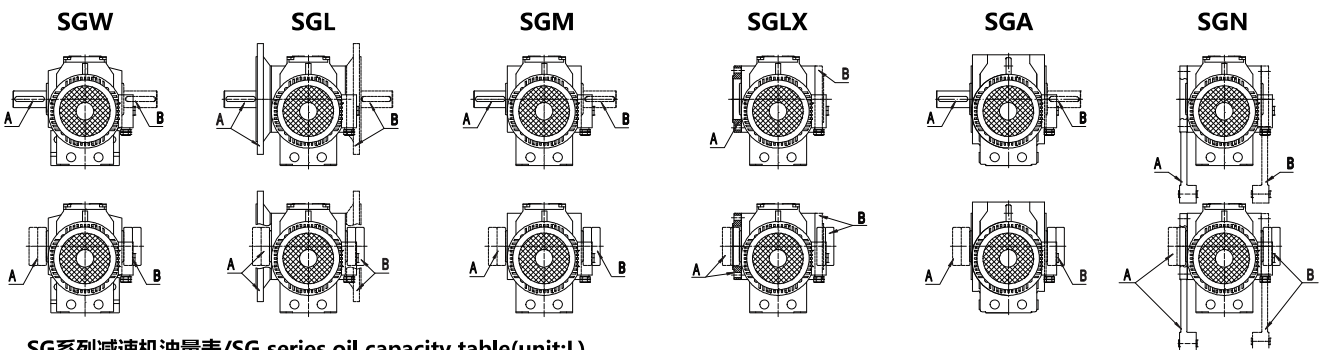
SG 系列减速器安装方位图/SG series installation direction diagram



SG 系列减速器接线盒及出线孔位置/SG series motor wiring box and hole position



SG 系列输出方向/SG series output direction:



SG系列减速机油量表/SG series oil capacity table(unit:L)

油量 (L) / 安装方位 机型号	SGW、SGL					
	M1	M2	M3	M4	M5	M6
SG37	0.25	0.4	0.5	0.6	0.4	0.4
SG47	0.35	0.8	0.7	1.1	0.8	0.8
SG57	0.5	1.2	1	1.5	1.3	1.3
SG67	1	2	2.2/3.1	3.2	2.6	2.6
SG77	1.9	4.2	3.7/5.4	6	4.4	4.4
SG87	3.3	8.1	6.9/10.4	12	8.4	8.4
SG97	6.8	15	13.4/18	22.5	17	17

SG系列减速机重量表/SG series weight table

机型号/type	SG37	SG47	SG55	SG67	SG77	SG87	SG97
重量kg/Weight kg	7.5	10	13.5	27	45	86	150

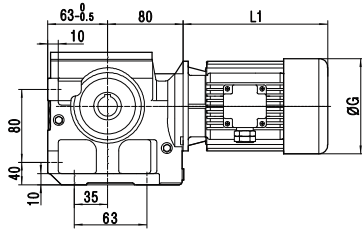
注：表中重量为不加油时重量，带输入轴、输入法兰另加10%；带电机根据所配规格另加。

Note: Inside the table is the weight when oil is not added. Weight should be added with 10% when input shaft and connection flange are furnished; If there is a motor please add weight according to motor type.

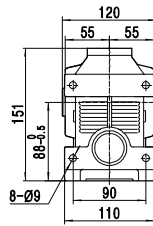


SG37 外形安装尺寸/dimensions:

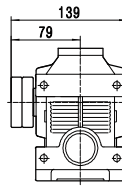
SGW37..



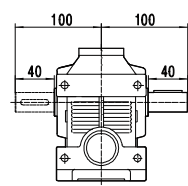
SG37..K



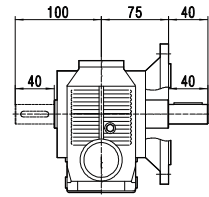
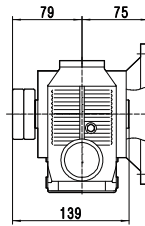
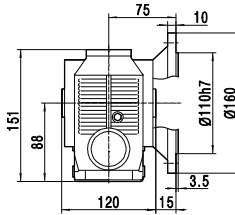
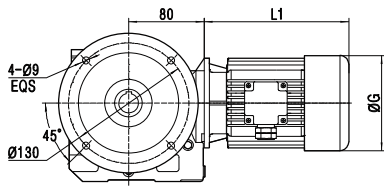
SG37..KH



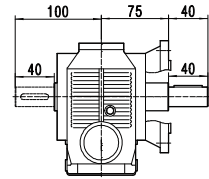
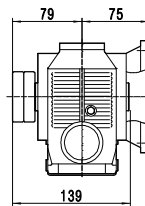
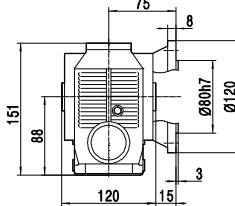
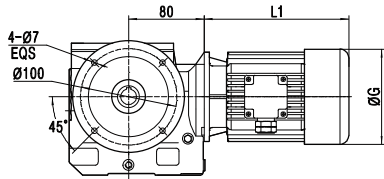
SG37..Z



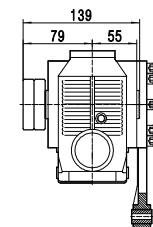
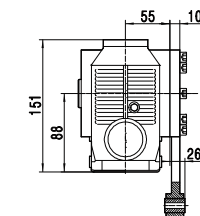
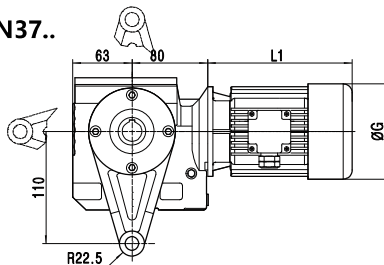
SGL37..Ø160



SGM37..Ø120

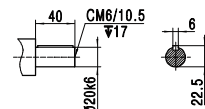


SGN37..

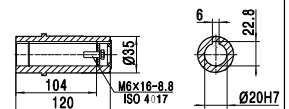


输出尺寸/Output dimension

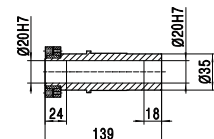
实心轴输出../Z
Solid shaft



平键空心轴尺寸../K
Hollow shaft with key

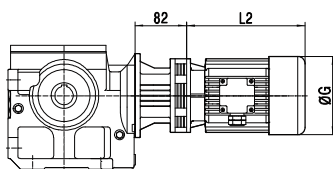


带胀紧盘空心轴尺寸../KH
Hollow shaft with expansion disk



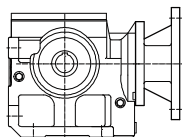
输入方式/input mode

SG..37WB85 /Combined with WB85



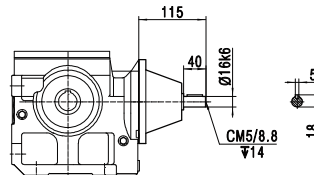
SG37..F

IIEC Flange input



SG37..S

Shaft input



Y2电机机座号 Motor Size	56	63	71	80			
功率/4P Power/(kw)	0.09	0.12 0.18	0.25 0.37	0.55			
L1	—	250	280	320			
L2	170	190	190	—			
ØG	120	130	145	175			

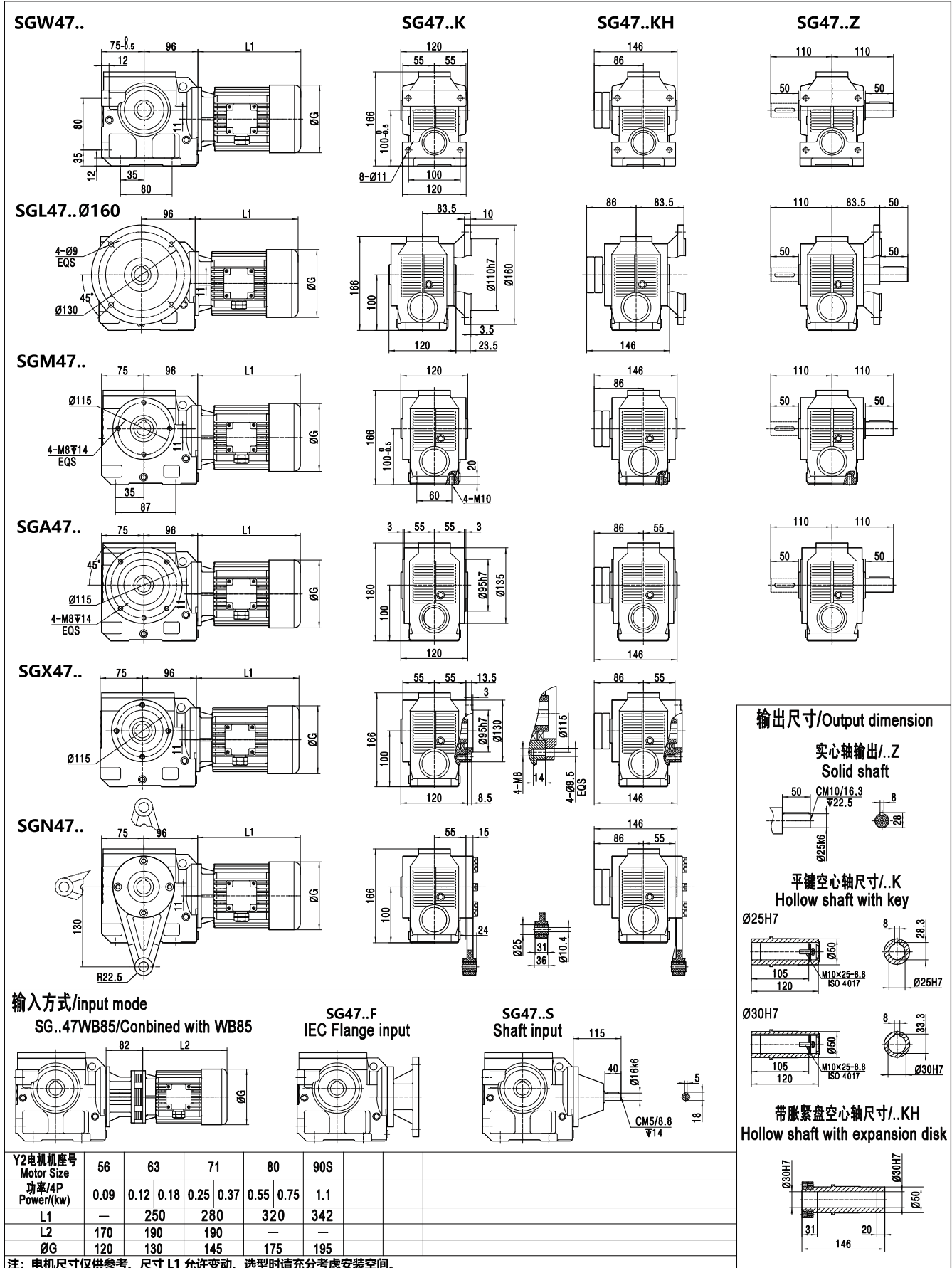
注: 电机尺寸仅供参考、尺寸 L1 允许变动、选型时请充分考虑安装空间。



SG37 系列传动能力表/SG37 series drive capacity table

P1		SG37 传动能力选型参数表/SG37 series of transmission power parameter form																	
		is精确传动比/Exact ratio is																	
参数代号 Parameter code		23.91	29.46	32.88	36.88	41.59	47.25	50.53	58.24	68.00	71.72	88.39	98.65	110.6	124.8	141.8	151.6	174.7	204.0
0.12kw/4P	T2(N·m)	15	18	20	22	25	28	30	34	39	41	45	49	55	62	63	68	73	85
	FB	4.9	4.2	3.8	3.5	3.2	2.9	2.7	2.4	2.5	2.4	2.0	1.92	1.83	1.67	1.50	1.42	1.25	1.08
0.18kw/4P	T2(N·m)	22	27	30	33	38	43	45	50	58	61	66	74	82	93	94	95	110	
	FB	3.2	2.8	2.5	2.4	2.1	1.94	1.83	1.61	1.72	1.66	1.39	1.28	1.22	1.11	1.00	0.94	0.83	
0.25kw/4P	T2(N·m)	30	37	41	47	53	56	60	70	81	85	91	102	115	123				
	FB	2.3	2.0	1.84	1.72	1.56	1.40	1.32	1.16	1.24	1.19	1.00	0.92	0.88	0.80				
0.37kw/4P	T2(N·m)	45	56	62	70	78	83	89											
	FB	1.59	1.38	1.24	1.16	1.05	0.95	0.89											
0.55kw/4P	T2(N·m)	67	83	92															
	FB	1.07	0.93	0.84															
n1=1450rpm/4P	n2 (rpm)	60.6	49.2	44.1	39.3	34.9	30.7	28.7	24.9	21.3	20.2	16.4	14.7	13.1	11.6	10.2	9.57	8.30	7.11
径向载荷 Radial Load	Fr2 (N)	2150	2380	2380	2550	2550	2550	2550	2550	2550	2550	2550	2550	2550	2550	2550	2550	2550	2550

SG47 外形安装尺寸/dimensions:



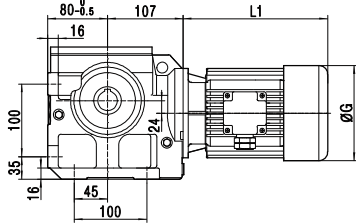
SG


SG47 系列传动能力表/SG47 series drive capacity table

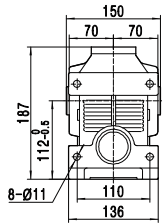
P1	参数代号 Parameter code	SG47 传动能力选型参数表/SG47 series of transmission power parameter form																	
		is精确传动比/Exact ratio is																	
0.12kw/4P	T2(N·m)	23.91	29.46	32.88	36.88	41.59	47.25	50.53	58.24	68.00	71.72	86.39	98.65	110.6	124.8	141.8	151.6	174.7	204.0
	FB								34	39	41	45	49	55	62	64	66	73	85
0.18kw/4P	T2(N·m)				34	38	41	44	50	59	61	68	74	83	93	96	100	110	128
	FB				4.5	4.0	3.6	3.4	3.0	2.9	2.8	2.6	2.4	2.1	1.94	1.72	1.67	1.44	1.28
0.25kw/4P	T2(N·m)	30	37	42	47	53	58	62	70	82	85	95	102	114	129	130	133	153	184
	FB	4.8	4.0	3.6	3.2	2.9	2.6	2.4	2.1	2.1	2.0	1.88	1.76	1.56	1.40	1.24	1.20	1.04	0.92
0.37kw/4P	T2(N·m)	45	55	62	69	78	85	91	104	120	126	135	151	170	192	197	200		
	FB	3.2	2.7	2.4	2.2	1.97	1.76	1.65	1.46	1.43	1.40	1.27	1.19	1.05	0.95	0.84	0.80		
0.55kw/4P	T2(N·m)	65	83	94	103	116	124	133	153	180	187	208	225						
	FB	2.2	1.83	1.65	1.49	1.33	1.18	1.11	0.98	0.96	0.94	0.85	0.80						
0.75kw/4P	T2(N·m)	91	112	125	141	159	173	185											
	FB	1.61	1.34	1.21	1.09	0.97	0.87	0.81											
1.1kw/4P	T2(N·m)	133	164	183															
	FB	1.10	0.92	0.83															
0.18kw/6P	T2(N·m)															134	143	165	194
	FB															1.14	1.1	0.96	0.85
n1=1450rpm/4P	n2(rpm)	60.6	49.2	44.1	39.3	34.9	30.7	28.7	24.9	21.3	20.2	16.4	14.7	13.1	11.6	10.2	9.57	8.30	7.11
n1=960rpm/6P	n2(rpm)															6.77	6.33	5.49	4.71
径向载荷 Radial Load	F _{r2} (N)	3030	3330	3500	3500	3760	4000	4120	4520	4550	4550	4550	4550	4550	4550	4550	4550	4550	4550

SG57 外形安装尺寸/dimensions:

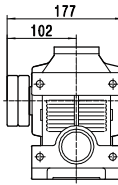
SGW57..



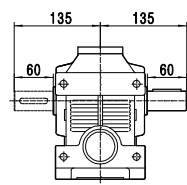
SG57..K



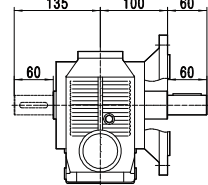
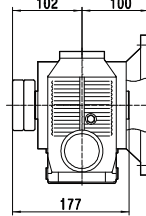
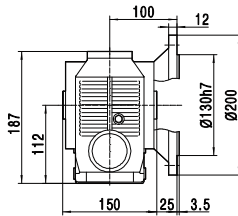
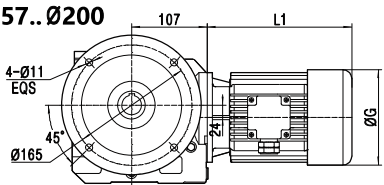
SG57..KH



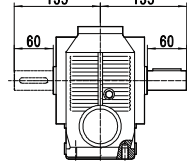
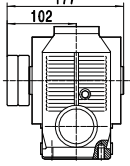
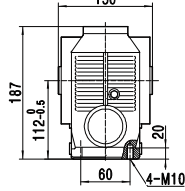
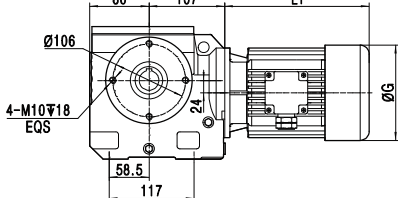
SG57..Z



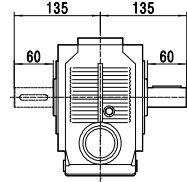
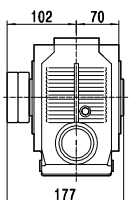
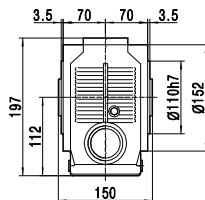
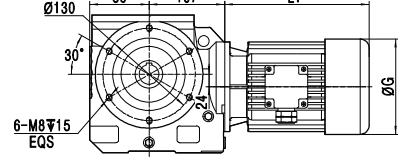
SGL57..Ø200



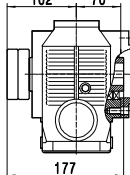
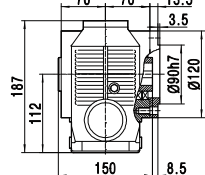
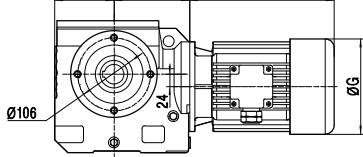
SGM57..



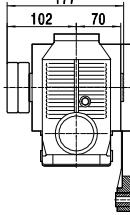
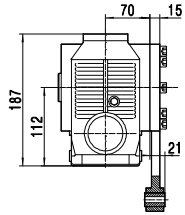
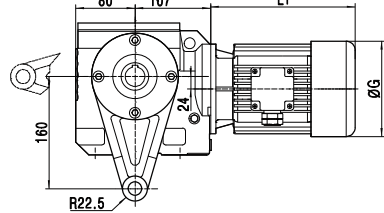
SGA57..



SGLX57..

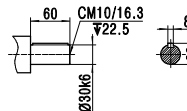


SGN57..

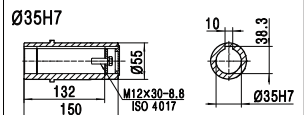
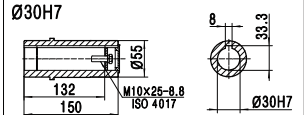


输出尺寸/Output dimension

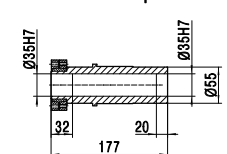
实心轴输出/..Z
Solid shaft



平键空心轴尺寸/..K
Hollow shaft with key

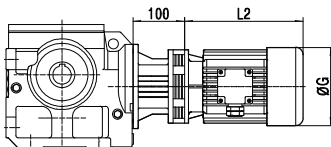


带胀紧盘空心轴尺寸/..KH
Hollow shaft with expansion disk

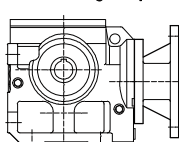


输入方式/input mode

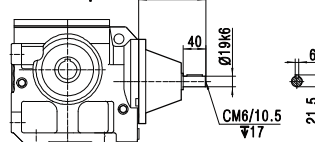
SG..57WB100/Combined with WB100



SG57..F
IEC Flange input



SG57..S
Shaft input



Y2电机机座号 Motor Size	63	71	80	90S	90L	100		
功率/4P Power/(kw)	0.18	0.25 0.37	0.55 0.75	1.1	1.5	2.2 3.0		
L1	250	280	320	342	367	400		
L2	190	190	225	—	—	—		
ØG	130	145	175	195	195	215		

注: 电机尺寸仅供参考, 尺寸 L1 允许变动, 选型时请充分考虑安装空间。


SG57 系列传动能力表/SG57 series drive capacity table

P1		SG57 传动能力选型参数表/SG57 series of transmission power parameter form																						
		is 精确传动比/Exact ratio is																						
参数代号 Parameter code		11.95	14.73	16.44	18.44	20.8	23.91	29.46	32.88	36.88	41.59	47.25	50.53	58.24	68.00	71.72	88.39	98.65	110.6	124.8	141.8	151.6	174.7	204.0
0.18kw/4P	T2(N·m)																68	74	83	93	96	100	110	128
	FB																4.8	4.4	4.0	3.6	3.2	3.1	2.6	2.2
0.25kw/4P	T2(N·m)										53	58	62	70	82	85	95	102	115	129	133	140	152	178
	FB										4.7	4.2	4.2	4.1	3.9	3.7	3.4	3.2	2.8	2.6	2.3	2.2	1.92	1.64
0.37kw/4P	T2(N·m)							55	62	69	78	85	91	104	121	126	140	151	168	191	217	220	226	264
	FB							4.4	4.0	3.6	3.2	2.8	2.8	2.7	2.6	2.5	2.3	2.1	1.95	1.76	1.57	1.51	1.30	1.11
0.55kw/4P	T2(N·m)					58	67	82	92	103	116	127	135	154	179	188	201	224	252	285	293	305	335	
	FB					4.5	3.6	2.9	2.7	2.4	2.1	1.93	1.91	1.84	1.80	1.72	1.58	1.45	1.31	1.18	1.05	1.02	0.87	
0.75kw/4P	T2(N·m)	62	69	78	83	83	91	112	125	140	158	173	186	215	245	255	284	307	344	388				
	FB	4.6	4.1	3.7	3.3	2.2	2.6	2.2	1.99	1.77	1.57	1.41	1.40	1.34	1.32	1.26	1.16	1.07	0.96	0.87				
1.1kw/4P	T2(N·m)	69	85	95	107	116	134	165	184	207	233	248	265	308	360	374								
	FB	3.9	3.2	2.8	2.5	2.2	1.82	1.49	1.35	1.21	1.07	0.96	0.95	0.93	0.90	0.86								
1.5kw/4P	T2(N·m)	94	116	130	146	158	183	225	251	281														
	FB	2.8	2.3	2.0	1.87	1.65	1.33	1.09	0.99	0.89														
2.2kw/4P	T2(N·m)	139	171	191	214	232	267																	
	FB	1.96	1.59	1.43	1.27	1.13	0.91																	
3.0kw/4P	T2(N·m)	189	233	260	291	316																		
	FB	1.44	1.17	1.05	0.93	0.83																		
0.18kw/6P	T2(N·m)																				145	150	166	193
	FB																				2.1	2.0	1.77	1.51
0.37kw/6P	T2(N·m)																				297	310	341	
	FB																				1.04	1.00	0.86	
n1=1450rpm/4P	n2(rpm)	121.3	98.4	88.2	78.6	69.7	60.6	49.2	44.1	39.3	34.9	30.7	28.7	24.9	21.3	20.2	16.4	14.7	13.1	11.6	10.2	9.57	8.30	7.11
n1=960rpm/6P	n2(rpm)																				6.77	6.33	5.49	4.71
径向载荷 Radial Load	F _{r2} (N)	—	—	—	—	—	5040	5540	5810	5950	6220	6390	6390	6390	6390	6390	6390	6390	6390	6390	6390	6390	6390	6390

SG67 外形安装尺寸/dimensions:

<p>SGW67..</p>	<p>SG67..K</p>	<p>SG67..KH</p>	<p>SG67..Z</p>
<p>SGL67.. Ø250 (Ø200)</p>			
<p>SGM67..</p>			
<p>SGA67..</p>			
<p>SGLX67..</p>			
<p>SGN67..</p>			

输入方式/input mode

SG..67WB100/Combined with WB100

SG67..F IEC Flange input

SG67..S Shaft input

输出尺寸/Output dimension

实心轴输出/..Z Solid shaft

平键空心轴尺寸/..K Hollow shaft with key

带膨胀盘空心轴尺寸/..KH Hollow shaft with expansion disk

Y2电机机座号 Motor Size	63	71	80	90S	90L	100	112	132S			
功率/4P Power/(kw)	0.18	0.25	0.37	0.55	0.75	1.1	1.5	2.2	3.0	4.0	5.5
L1	250	280	320	342	367	400	400	408	473		
L2	190	190	225	-	-	-	-	-	-		
ØG	130	145	175	195	195	215	240	275			

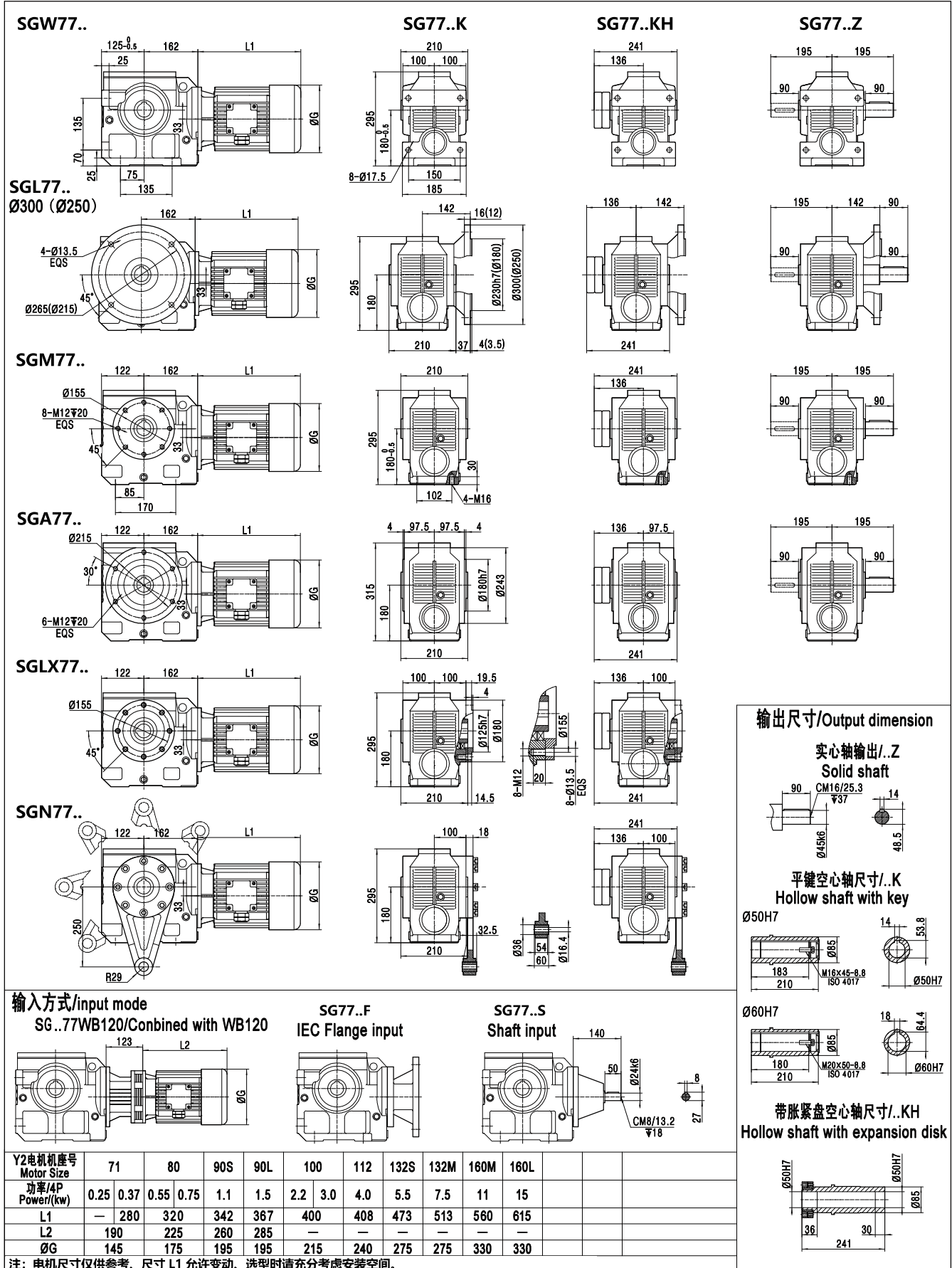
注: 电机尺寸仅供参考、尺寸 L1 允许变动、选型时请充分考虑安装空间。

SG


SG67 系列传动能力表/SG67 series drive capacity table

参数代号 Parameter code		SG67 传动能力选型参数表/SG67 series of transmission power parameter form																																				
		is 精确传动比/Exact ratio is																																				
0.18kw/4P	T2(N·m)	12.05	14.40	16.34	18.17	20.31	22.84	24.11	28.80	32.68	36.35	40.63	45.68	51.75	56.74	67.50	72.32	86.40	98.04	109.0	121.9	137.1	155.3	170.2	202.5	230.0	246.2	285.0										
	FB																						98	107	127	170.2	202.5	230.0	246.2	285.0								
0.25kw/4P	T2(N·m)																																					
	FB																			102	113	126	129	135	149	177	193	203	235									
0.37kw/4P	T2(N·m)																																					
	FB																			4.8	4.4	4.0	3.6	3.2	3.0	2.5	2.2	2.1	1.80									
0.55kw/4P	T2(N·m)																																					
	FB																			93	101	120	127	137	151	167	187	190	201	201	220	262	271	290	336			
0.75kw/4P	T2(N·m)																																					
	FB																			4.7	4.3	3.7	3.6	3.4	3.3	2.9	2.7	2.4	2.1	2.0	1.73	1.51	1.43	1.22				
1.1kw/4P	T2(N·m)																																					
	FB																			80	91	101	113	122	139	150	178	189	203	224	249	277	264	299	328	390	403	431
1.5kw/4P	T2(N·m)																																					
	FB																			4.9	4.4	4.4	4.0	3.5	3.2	2.9	2.5	2.4	2.3	2.2	2.0	1.82	1.64	1.47	1.36	1.16	1.02	0.96
2.2kw/4P	T2(N·m)																																					
	FB																			92	110	124	138	155	167	189	205	243	257	268	304	338	378	386	406	447	530	
3.0kw/4P	T2(N·m)																																					
	FB																			4.0	3.6	3.2	2.9	2.6	2.3	2.1	1.83	1.80	1.71	1.63	1.47	1.33	1.20	1.08	1.00	0.85		
4.0kw/4P	T2(N·m)																																					
	FB																			105	113	127	255	270	323	366	407	455	512	555								
5.5kw/4P	T2(N·m)																																					
	FB																			4.6	4.0	3.6	2.7	2.4	2.2	2.1	2.0	1.79	1.60	1.46	1.25	1.21	1.16	1.11	0.91	0.82		
0.18kw/6P	T2(N·m)																																					
	FB																			114	129	144	154	174	183	219	249	278	310	327	371	406	487	514	555	610		
0.37kw/6P	T2(N·m)																																					
	FB																			4.2	3.7	3.3	2.9	2.6	2.0	1.81	1.63	1.53	1.47	1.31	1.17	1.07	0.91	0.88	0.85	0.81		
n1=1450rpm/4P	n2(rpm)																																					
	n2(rpm)																																					
n1=960rpm/6P	n2(rpm)																																					
	n2(rpm)																																					
径向载荷 Radial Load	Ft2(N)																																					
	Ft2(N)																																					

SG77 外形安装尺寸/dimensions:




SG77 系列传动能力表/SG77 series drive capacity table

参数代号 Parameter code		SG77 传动能力选型参数表/SG77 series of transmission power parameter form																															
		is 精确传动比/Exact ratio is																															
P1	T2(N·m)	12.05	14.40	16.34	18.17	20.31	22.84	24.11	28.80	32.65	36.34	40.63	45.68	51.75	54.74	67.50	72.32	86.40	98.04	109.0	121.9	137.1	155.3	170.2	202.5	235.7	249.8	282.5	323.4	348.0			
		FB																						201	220	262	293	304	344	378	390		
0.37kw/4P	T2(N·m)																																
		FB																															
0.55kw/4P	T2(N·m)																																
		FB																															
0.75kw/4P	T2(N·m)																																
		FB																															
1.1kw/4P	T2(N·m)																																
		FB																															
1.5kw/4P	T2(N·m)																																
		FB																															
2.2kw/4P	T2(N·m)																																
		FB																															
3.0kw/4P	T2(N·m)																																
		FB																															
4.0kw/4P	T2(N·m)																																
		FB																															
5.5kw/4P	T2(N·m)																																
		FB																															
7.5kw/4P	T2(N·m)																																
		FB																															
11kw/4P	T2(N·m)																																
		FB																															
15kw/4P	T2(N·m)																																
		FB																															
0.18kw/6P	T2(N·m)																																
		FB																															
0.37kw/6P	T2(N·m)																																
		FB																															
0.75kw/6P	T2(N·m)																																
		FB																															
n1=1450rpm/4P	n2(rpm)																																
		FB																															
n1=960rpm/6P	n2(rpm)																																
		FB																															
空向载荷 Radial Load	F1/2(N)																																
		FB																															



SG87 外形安装尺寸/dimensions:

<p>SGW87..</p>	<p>SG87..K</p>	<p>SG87..KH</p>	<p>SG87..Z</p>
<p>SGL87..Ø350</p>			
<p>SGM87..</p>			
<p>SGA87..</p>			
<p>SGLX87..</p>			
<p>SGN87..</p>			

<p>输入方式/input mode</p> <p>SG..87WB120/Combined with WB120</p>	<p>SG87..F</p> <p>IEC Flange input</p>	<p>SG87..S</p> <p>Shaft input</p>
---	--	---

<p>输出尺寸/Output dimension</p> <p>实心轴输出/..Z</p> <p>Solid shaft</p>	<p>平键空心轴尺寸/..K</p> <p>Hollow shaft with key</p>	<p>带膨胀盘空心轴尺寸/..KH</p> <p>Hollow shaft with expansion disk</p>
---	---	---

<p>Y2电机机座号</p> <p>Motor Size</p>	71	80	90S	90L	100	112	132S	132M	160M	160L	180M	180L			
<p>功率/4P</p> <p>Power/(kw)</p>	0.25	0.37	0.55	0.75	1.1	1.5	2.2	3.0	4.0	5.5	7.5	11	15	18.5	22
L1	—	320	342	367	400	408	473	513	560	615	645	675			
L2	190	225	260	285	—	—	—	—	—	—	—	—			
ØG	145	175	195	195	215	240	275	275	330	330	380	380			

注: 电机尺寸仅供参考、尺寸 L1 允许变动、选型时请充分考虑安装空间。

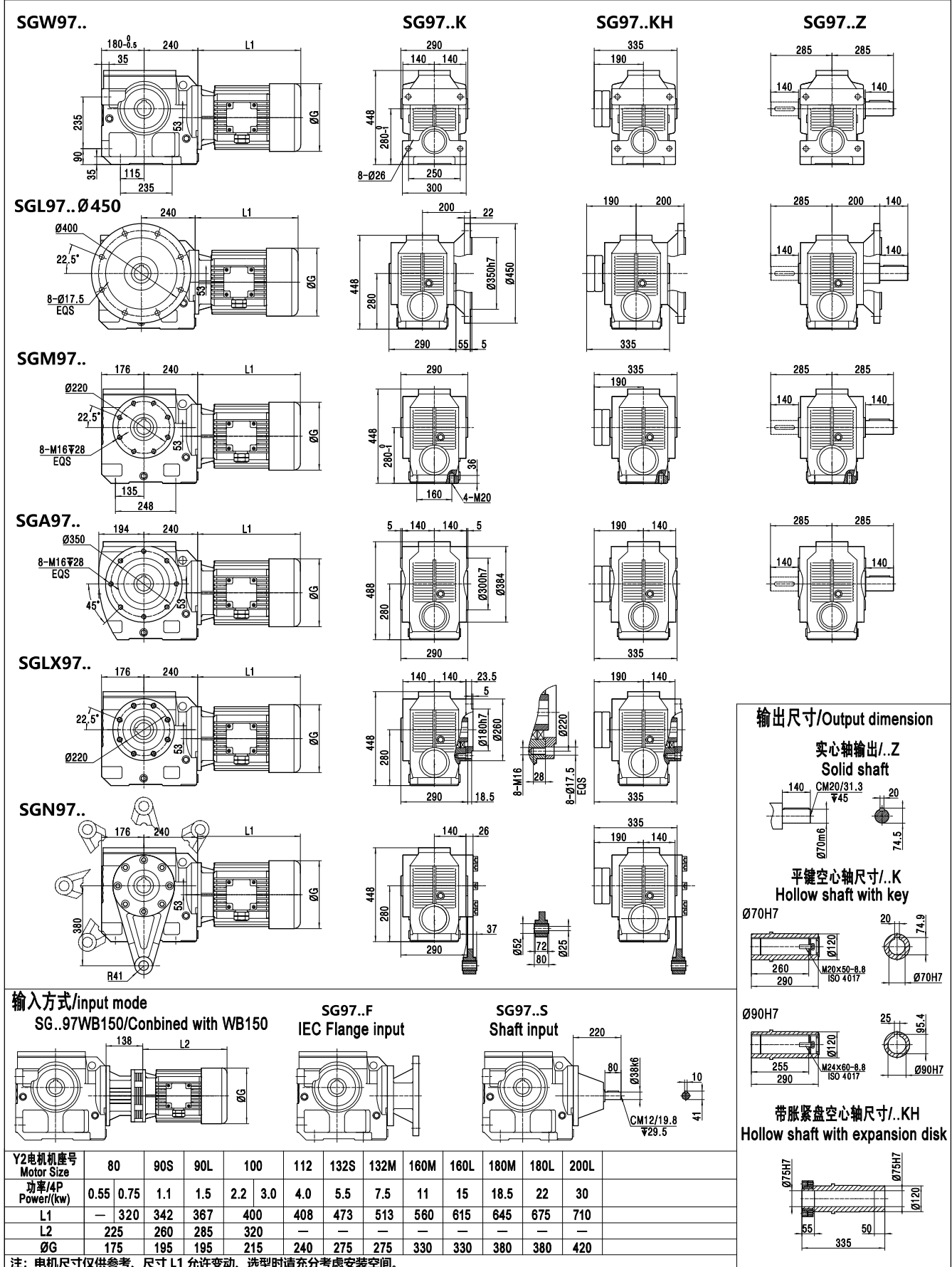


SG87 系列传动能力表/SG87 series drive capacity table

P1	参数代号 Parameter code	SG87传动能力选型参数表/SG87 series of transmission power parameter form																														
		is精确传动比/Exact ratio is																														
		11.72	14.46	16.15	18.61	20.70	23.44	28.93	32.31	37.22	41.40	46.30	52.14	56.74	67.50	70.31	86.79	96.92	111.7	124.2	138.9	156.4	170.2	202.5	228.3	250.2	275.9	324.0	343.4	389.1		
0.55kw/4P	T2(N·m)																						327	389	422	463	500	563	572	634		
	FB																						4.9	4.3	3.9	3.6	3.3	2.8	2.6	2.3		
0.75kw/4P	T2(N·m)																						410	446	530	618	681	768	780	865		
	FB																			348	387	391	410	3.6	3.2	2.8	2.6	2.4	2.0	1.95	1.73	
1.1kw/4P	T2(N·m)																						601	654	778	910	906	999	1127	1144	1269	
	FB																			4.9	4.5	4.2	3.8	2.5	2.1	1.81	1.83	1.66	1.41	1.33	1.18	
1.5kw/4P	T2(N·m)																						819	891	1060	1150	1236	1363	1547	1561	1730	
	FB																			2.4	2.2	2.1	1.91	1.83	1.60	1.43	1.34	1.22	1.03	0.97	0.86	
2.2kw/4P	T2(N·m)																						1201	1311	1559	1687	1813	1999				
	FB																			1.83	1.67	1.55	1.43	1.24	1.09	0.97	0.91	0.83				
3.0kw/4P	T2(N·m)																						1634	1779	2121							
	FB																			1.34	1.23	1.14	1.05	0.96	0.92	0.80						
4.0kw/4P	T2(N·m)																															
	FB																			1.01	0.92	0.85										
5.5kw/4P	T2(N·m)																															
	FB																															
7.5kw/4P	T2(N·m)																															
	FB																															
11kw/4P	T2(N·m)																															
	FB																															
15kw/4P	T2(N·m)																															
	FB																															
18.5kw/4P	T2(N·m)																															
	FB																															
22kw/4P	T2(N·m)																															
	FB																															
0.25kw/6P	T2(N·m)																															
	FB																															
0.55kw/6P	T2(N·m)																															
	FB																															
1.1kw/6P	T2(N·m)																															
	FB																															
n1=1450rpm/4P	n2(rpm)																															
	n2(rpm)																															
径向载荷 Radial Load	Ft2(N)	11200	12000	13210	14220	16520	18530	20990	22100	23030	24650	24650	24650	24650	24650	24650	24650	24650	24650	24650	24650	24650	24650	24650	24650	24650	24650	24650	24650	24650	24650	



SG97 外形安装尺寸/dimensions:





SG97 系列传动能力表/SG97 series drive capacity table

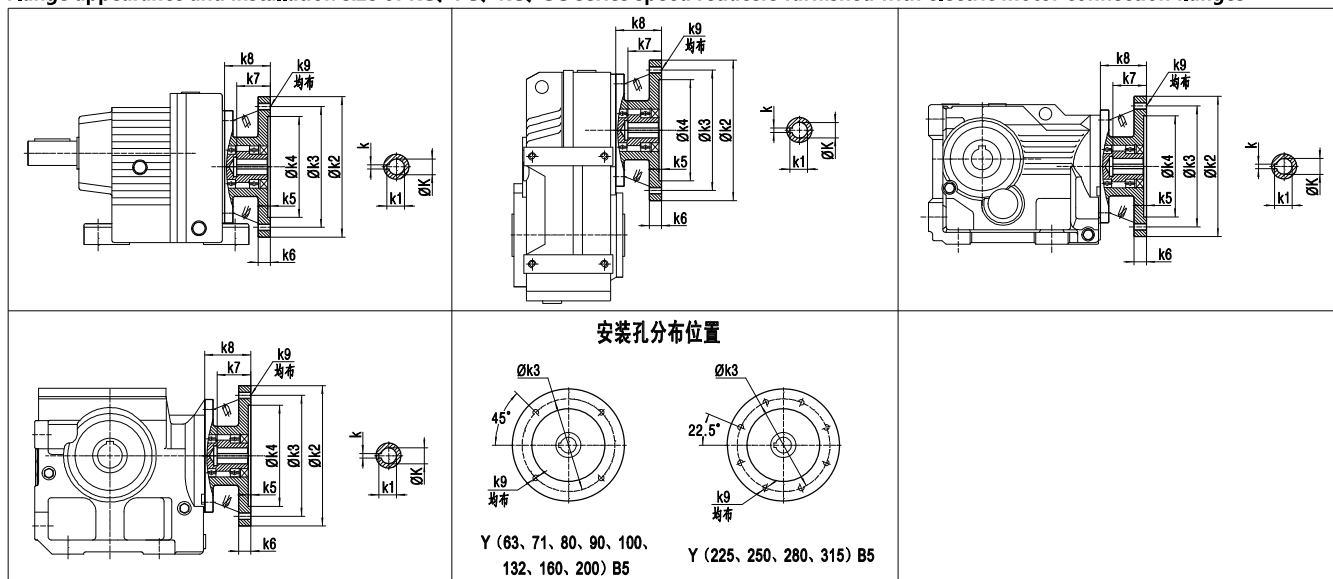
P1	参数代号 Parameter code	SG97 传动能力选型参数表/SG97 series of transmission power parameter form																															
		is精确传动比/Exact ratio is																															
0.75kw/4P	T2(N·m)	12.12	14.46	16.15	18.61	20.70	24.23	28.93	32.31	37.22	41.40	46.30	52.14	56.74	67.50	72.69	86.79	96.92	111.7	124.2	138.9	156.4	170.2	202.5	228.3	250.2	290.5	324.0	343.4	389.1			
	FB																																
1.1kw/4P	T2(N·m)																																
	FB																																
1.5kw/4P	T2(N·m)																																
	FB																																
2.2kw/4P	T2(N·m)																																
	FB																																
3.0kw/4P	T2(N·m)																																
	FB																																
4.0kw/4P	T2(N·m)																																
	FB																																
5.5kw/4P	T2(N·m)																																
	FB																																
7.5kw/4P	T2(N·m)																																
	FB																																
11kw/4P	T2(N·m)																																
	FB																																
15kw/4P	T2(N·m)																																
	FB																																
18.5kw/4P	T2(N·m)																																
	FB																																
22kw/4P	T2(N·m)																																
	FB																																
30kw/4P	T2(N·m)																																
	FB																																
0.37kw/6P	T2(N·m)																																
	FB																																
0.75kw/6P	T2(N·m)																																
	FB																																
1.5kw/6P	T2(N·m)																																
	FB																																
n1=1450rpm/4P	n2(rpm)	120	100	89.8	77.9	70.0	59.8	50.1	44.9	39.0	35.0	31.3	27.8	25.6	21.5	19.9	16.7	15.0	13.0	11.7	10.4	9.27	8.52	7.16	6.35	5.80	4.99	4.48	4.22	3.73			
n1=960rpm/6P	n2(rpm)																																
径向载荷 Radial Load	F/2(N)	12600	14300	16500	18900	20900	21160	24650	25840	26600	27680	28960	29320	29320	29320	29320	29320	29320	29320	29320	29320	29320	29320	29320	29320	29320	29320	29320	29320	29320			





RG、FG、KG、SG 系列减速器配电机连接法兰的外形及安装尺寸:

Flange appearance and installation size of RG、FG、KG、SG series speed reducers furnished with electric motor connection flanges



电机机座号 Motor seat No.	电机功率、极数 Motor power and poles			尺寸/Size										
	4P	6P	8P	ØK (E7)	k	k1	k2	k3	k4 (H7)	k5	k6	k7	k8	k9
Y63	0.12			11	4	12.8	140	115	95	4	16	27	64	4-M8
	0.18													
Y71	0.25	0.18		14	5	16.3	160	130	110	4	16	33	64	4-M8
	0.37	0.25												
Y80	0.55	0.37	0.18	19	6	21.8	200	165	130	4	18	43	72	4-M10
	0.75	0.55	0.25											
Y90	1.1	0.75	0.37	24	8	27.3	200	165	130	4	18	54	72	4-M10
	1.5	1.1	0.55											
Y100	2.2	1.5	0.75	28	8	31.3	250	215	180	5	22	65	83	4-M12
	3.0		1.1											
Y112	4.0	2.2	1.5	28	8	31.3	250	215	180	5	22	65	83	4-M12
Y132	5.5	3.0	2.2	38	10	41.3	300	265	230	5	25	85	101	4-M12
	7.5	4.0	3.0											
		5.5												
Y160	11	7.5	4.0	42	12	45.3	350	300	250	6	30	115	145	4-M16
			5.5											
	15	11	7.5											
Y180	18.5			48	14	51.8	350	300	250	6	30	115	145	4-M16
	22	15	11											
Y200	30	18.5	15	55	16	59.3	400	350	300	6	32	115	160	4-M16
		22												
Y225	37		18.5	60	18	64.4	450	400	350	6	35	145	175	8-M16
	45	30	22											
Y250	55	37	30	65	18	69.4	550	500	450	6	35	145	215	8-M16
Y280	75	45	37	75	20	79.9	550	500	450	6	35	145	215	8-M16
	90	55	45											
Y315	110	75		80	22	85.4	660	600	550	7	40	175	265	8-M20
	132	90												



减速器常见故障、原因、措施 Common malfunctions, reasons and measures



故障 Malfunction	原因 Causes	措施 Measures
减速器漏油 Oil-leak if gear unit	箱体盖或者联接处的密封不良 Sealing at cover and connection not in good state	检查密封和连接处, 如果必要的话, 更换新的。 将连接处密封好。 Check air-proof and connection part, replace then if necessary, and seal up connection part.
	油封漏油 Oil seal leaks oil.	和售后服务部联系, 换新的油封。 Please contact after sales service department to replace it with new oil seal.
油中有水 Water in oil	油中有杂物 Mixer in oil	用试管检查油的状态是否有水份存在。实验室分析油。 Classify if there is water in oil by using tube, Analyse oil in laboratory.
	润滑油冷却器或者冷却螺旋管失效 Cooling coil is if malfunction	和售后服务部联系, 找出并修理漏油之处, 更换冷却器或者螺旋管。 Consult after-sales department, Find out and repair leakage place, Replace cooling coil.
	减速机表面受机器间通风过来的凉气而产生凝露 Cool air will cause water drop in gear unit	用适合的保温材料将减速机保护起来, 关闭空气的出口或者在结构上改变其方向。 Shelter gear units with proper.
轴承处的振幅升高 Swing at bearing higher	轴承损坏 Bearing is damaged	和售后服务部联系, 检查并按需更换轴承。 Consult after-sales department, Check and replace gears.
	齿轮损坏 Gear is damaged	和售后服务部联系, 检查并按需更换齿轮。 Consult after-sales department, Check and replace gears.
止回装置的温度过高, 止回功能的失效 Temperature of anti-backstop too high and it becomes malfunction	止回装置损坏 Anti-backstop becomes malfunction	和售后服务部联系, 检查并按需更换止回装置。 Consult after-sales department, Replace anti-backstop.
轴承温度升高 Bearing temperature rise	箱本里面的油面过高或过低 Oil level is too high or low	在室温下检查油面的高度并按需加油 Check oil level at room temperature and add or reduce oil
	油过于陈旧 Oil is used too long	和客户服务部联系。检查上次换油时间 Consult after-sales department. Check the date that oil be replaced last time.
	油泵的机械故障 Malfunction of oil pump	和客户服务部联系。检查油泵的工作是否正常, 修理或换新的油泵 Consult after-sales department. Check if pump works normally, repair or replace it.
	轴承损坏 Bearings get damaged	和售后服务部联系, 查阅操作人员在振动测量中所获得的数据, 检查并按需更换轴承。 Consult after-sales department. -look up the data about vibration. -check and replace it on request.



故障 Malfunction	原因 Causes	措施 Measures
工作温度升高 Working temper ature too high	箱体里面的油面过高 Oil leve is too high	检查油面高度，如果有必要的话进行调整。 Check oil level,and adjust if necessary.
	油过于陈旧 Oil is used too long	和售后服务部联系。检查上一次换油的时间，如果有必要的话就更换。 Consult after-sales department,Check the date that oil was replaced last time,replace it if necessary.
	通过水冷装置的油流过低，其原因是滤油器严重堵塞 Oil flux through water cooling devices is too low	清理滤油器 Clean oil filter
	油泵的机械故障，油泵损坏 Malfunction of oil pump oil pump damage	和售后服务部联系。检查油泵的功能是否正常，修理或者换新油泵。 Consult after-sales department,Check of oil pump works normally,Repair or replace it.
	在配备了风扇的减速机上，风扇罩和箱体严重污染 Enteance of fan shield and housing polluted seriously	清理风扇罩和箱体 Cleanse fan shield and housing.
	配备了冷却螺旋管的减速机，冷却螺旋管里面结垢 Residues in cooling coil	和售后服务部联系。清理或者更换螺旋管。 Consult after-sales department,Clean or replace cooling coil.
在减速机的紧固件处有大的噪声 High noise at tightening parts	紧固件松动了 Loose of tightening parts	将螺栓/螺母拧紧到规定的扭矩。更换损坏了的螺栓、螺母。 Tighten nut bolt to correct stare Replace damagde nut/bolt
减速机的噪声变化 Changing noise	齿轮的轮齿发生了损坏 Teeth of gears get damaged	和客户服务部联系。检查所有零件上的齿，更换损坏了的零件。 Consult after-sales department Check teeth of gears and replace damaged ome.
	轴承间隙过大 Clearance of bearings too big	和客户服务部联系。调整轴承间隙。 Consult after-sales department Adjust the clearance of bearings
	轴承损坏 Bearings get damaged	和客户服务部联系。更换坏的轴承。 Consult after-sales department Replace damaged bearings